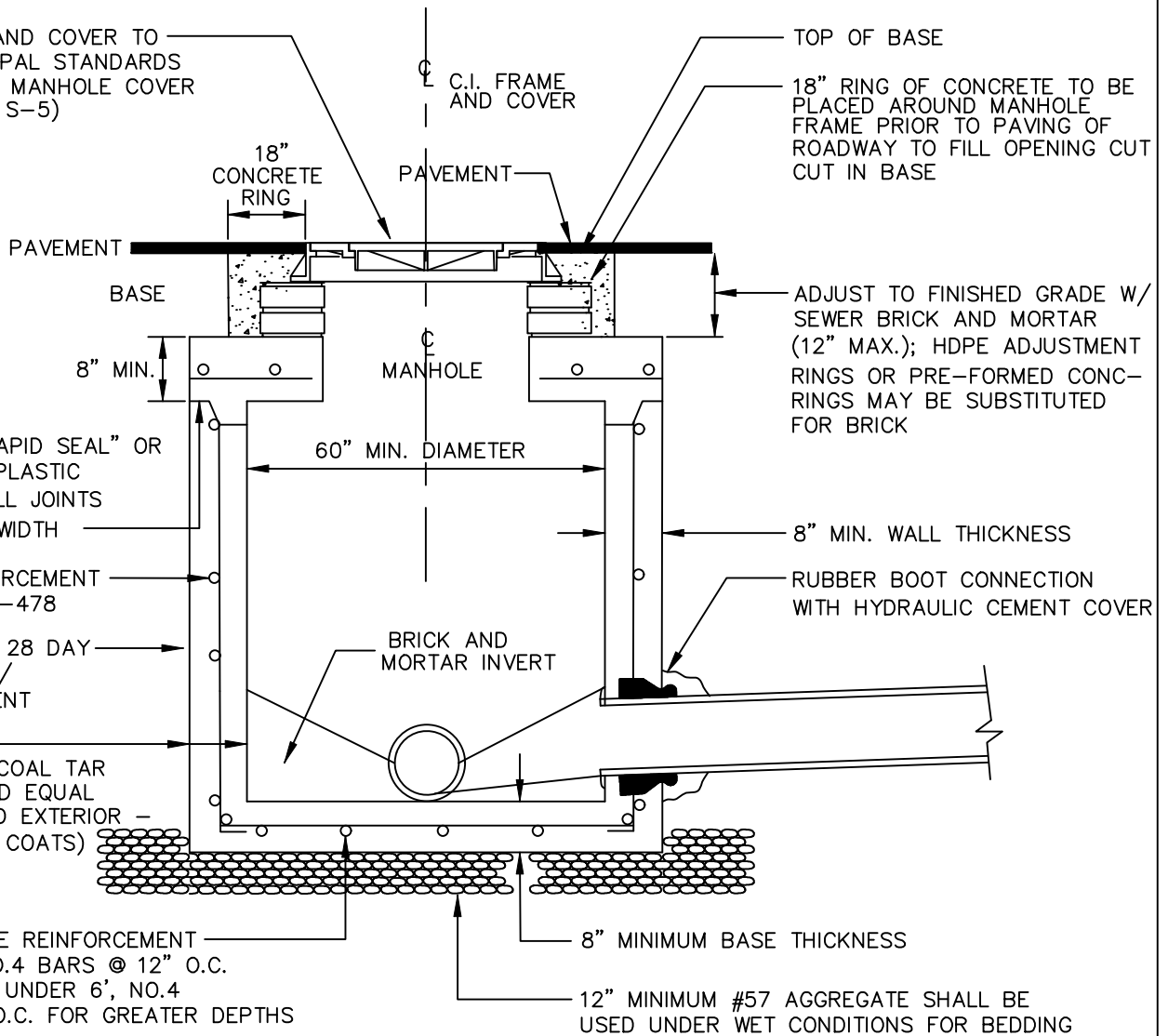


C.I. FRAME AND COVER TO MEET MUNICIPAL STANDARDS FOR DOUBLE MANHOLE COVER (SEE DETAIL S-5)

C.I. FRAME AND COVER

TOP OF BASE

18" RING OF CONCRETE TO BE PLACED AROUND MANHOLE FRAME PRIOR TO PAVING OF ROADWAY TO FILL OPENING CUT IN BASE



INSTALL "WRAPID SEAL" OR "EZ-WRAP" PLASTIC EQUAL AT ALL JOINTS 9" MINIMUM WIDTH

WALL REINFORCEMENT PER ASTM C-478

4,000 PSI @ 28 DAY CONCRETE W/ TYPE II CEMENT

PAINT: EPOXY AND COAL TAR OR APPROVED EQUAL INTERIOR AND EXTERIOR - 16 MILS (@3 COATS) EACH

TYPICAL BASE REINFORCEMENT SHALL BE NO.4 BARS @ 12" O.C. FOR DEPTHS UNDER 6', NO.4 BARS @ 9" O.C. FOR GREATER DEPTHS

12" MINIMUM #57 AGGREGATE SHALL BE USED UNDER WET CONDITIONS FOR BEDDING

NOTES:

1. INSTALL EZ-WRAP PLASTIC OR EQUAL AT ALL JOINTS, 9" MINIMUM WIDTH.
2. NON-PENETRATING PICK-HOLES IN ALL CONCRETE SECTIONS.
3. USE FARBERTITE BITUMASTIC SEALER BETWEEN SECTIONS OF MANHOLE.
4. 0.1' PIPE ELEVATION DROP ACROSS MANHOLE.



STANDARD CONSTRUCTION DETAIL  
SANITARY SDEWER SHALLOW MANHOLE  
(DEPTH 60" OR LESS)

REV. 12/18

FILE NAME:

S7.DWG

DETAIL REF:

**S-7**