

BLACK PLASTIC COATED
CHAIN LINK FENCING,
WOODEN SHADOW BOX
FENCE OR MASONRY WALL
AS APPROVED PER THE LDC
ARCHITECTURAL AND LANDSCAPE
REQUIREMENTS FOR THE
DEVELOPMENT

EMERGENCY PUMP CONNECTION:

- 1 48"X48" VAULT
- 1 CAM LOCK 4" FACING UP
- 2 CHECK VALVES
- 2 PRESSURE TRANSDUCERS*
- 3 VALVES NUT FACING UP
- *316 SS TUBE & SOCKET, BACK
CONNECTED WITH 1/4" NPT ON SERVICE
SADDLE, 3/4" COPR STOP, SS DIAPHRAGM
SEAL, 0-100 PSI RANGE

PERVIOUS AREAS TO BE #57
STONE 6" DEEP

RIGHT OF WAY LINE

VALVE BOX

30' MIN. UTILITY EASEMENT

30' MIN.
UTILITY EASEMENT

ELECTRICAL
RACK

HOSE
BIBB

SEE NOTE 2

DRIVEWAY WITH
FLARES

ROADWAY

SANITARY SEWER

SANITARY SEWER

PVC FORCE MAIN

NOTES:

1. DRIVEWAY TO BE 6" THICK 3,000 PSI CONCRETE AT 28 DAYS WITH 6X6 10/10 WW MESH. BASE TO BE COMPACTED AND TESTED TO 98% DENSITY WITH MINIMUM LBR 40 BASED ON AASHTO T-180 MODIFIED PROCTOR TEST.
2. 1" SERVICE WITH HOSE BIBB. IF RECLAIMED WATER IS UNAVAILABLE FOR LIFT STATION WATER SERVICE, CONTRACTOR SHALL CONNECT TO POTABLE WATER WITH BFP DEVICE.
3. 12' HAMMERHEAD DRIVEWAY OUTSIDE FENCE MAY BE REQUIRED DEPENDS ON SITE CONDITION.
4. FENCE MAY BE RELOCATED INTERNALLY WITHIN SITE TO CREATE A 25' X 25' SITE IF LANDSCAPING MATERIALS ARE INSTALLED AROUND THE PERIMETER. ANY FENCE MATERIAL OTHER THAN BLACK PLASTIC COATED CHAIN LINK OR WOODEN SHADOW BOX SHALL BE MAINTENANCE BY DEVELOPER OR HOA.
5. SITE FINISH GRADE SHALL BE EQUAL TO OR GREATER THAN THE C/L ELEVATION OF ADJACENT ROADWAY; PROVIDE POSITIVE DRAINAGE AWAY FROM CENTER AND SITE SURROUNDINGS.



STANDARD CONSTRUCTION DETAIL
SUBMERSIBLE LIFT STATION LAYOUT

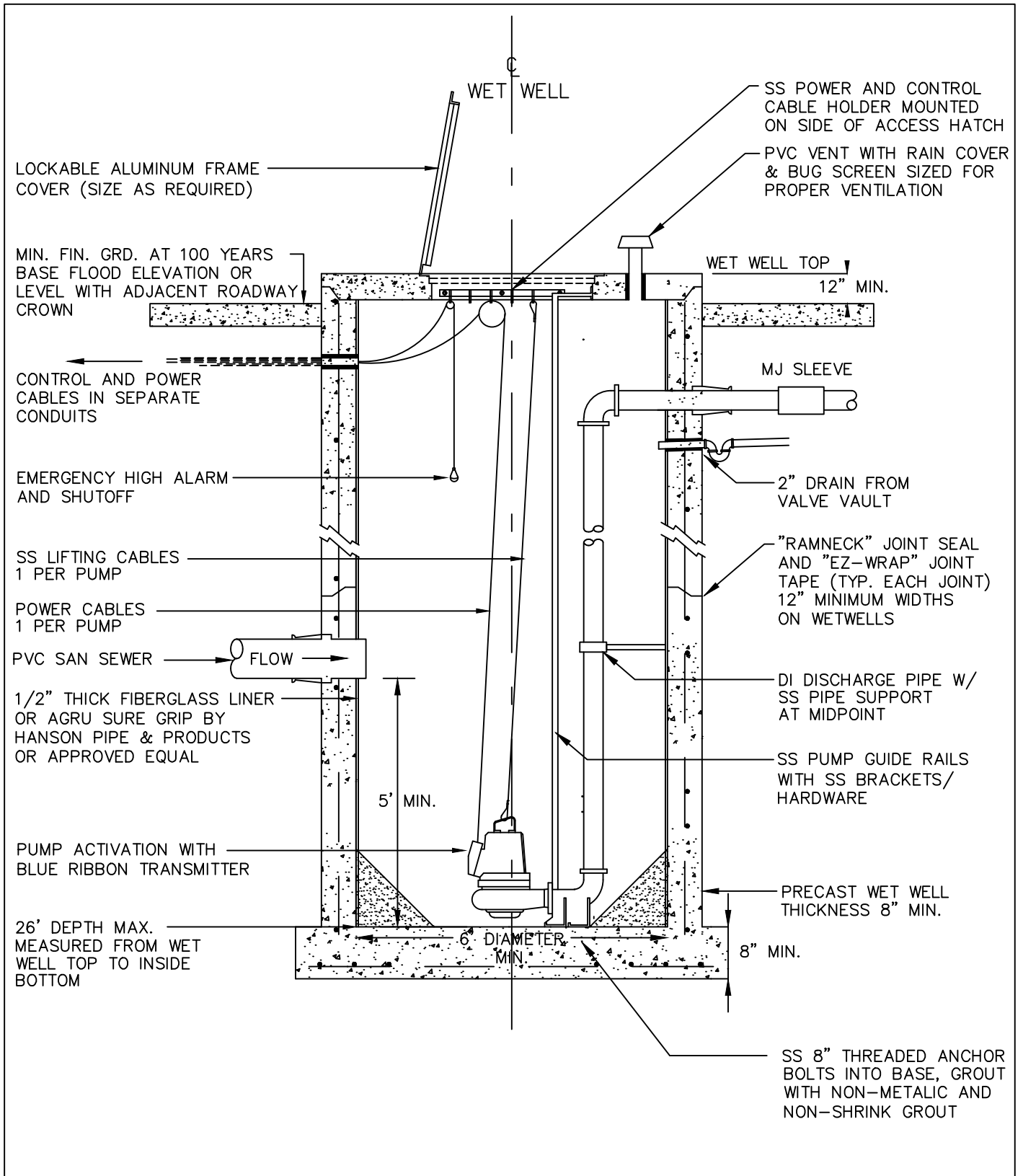
FILE NAME:

S16.DWG

DETAIL REF:

S-16

REV. 12/18



STANDARD CONSTRUCTION DETAIL
 SUBMERSIBLE LIFT STATION LAYOUT –
 WET WELL

REV. 12/18

FILE NAME:

S17.DWG

DETAIL REF:

S-16.1