

**Mead & Hunt, Inc.**  
 4401 Eastport Parkway  
 Port Orange, FL 32127  
 phone: 386-761-6810  
 meadhunt.com  
 FL Cert. #26730



These drawings are prepared for the City of Port Orange, Florida. The City of Port Orange is responsible for the design and construction of the project. The City of Port Orange is not responsible for the design and construction of the project. The City of Port Orange is not responsible for the design and construction of the project.

**CITY OF PORT ORANGE**  
**VIRGINIA AVE. AND MONROE ST.**  
**STORMWATER IMPROVEMENTS**  
 PORT ORANGE, FLORIDA 32127

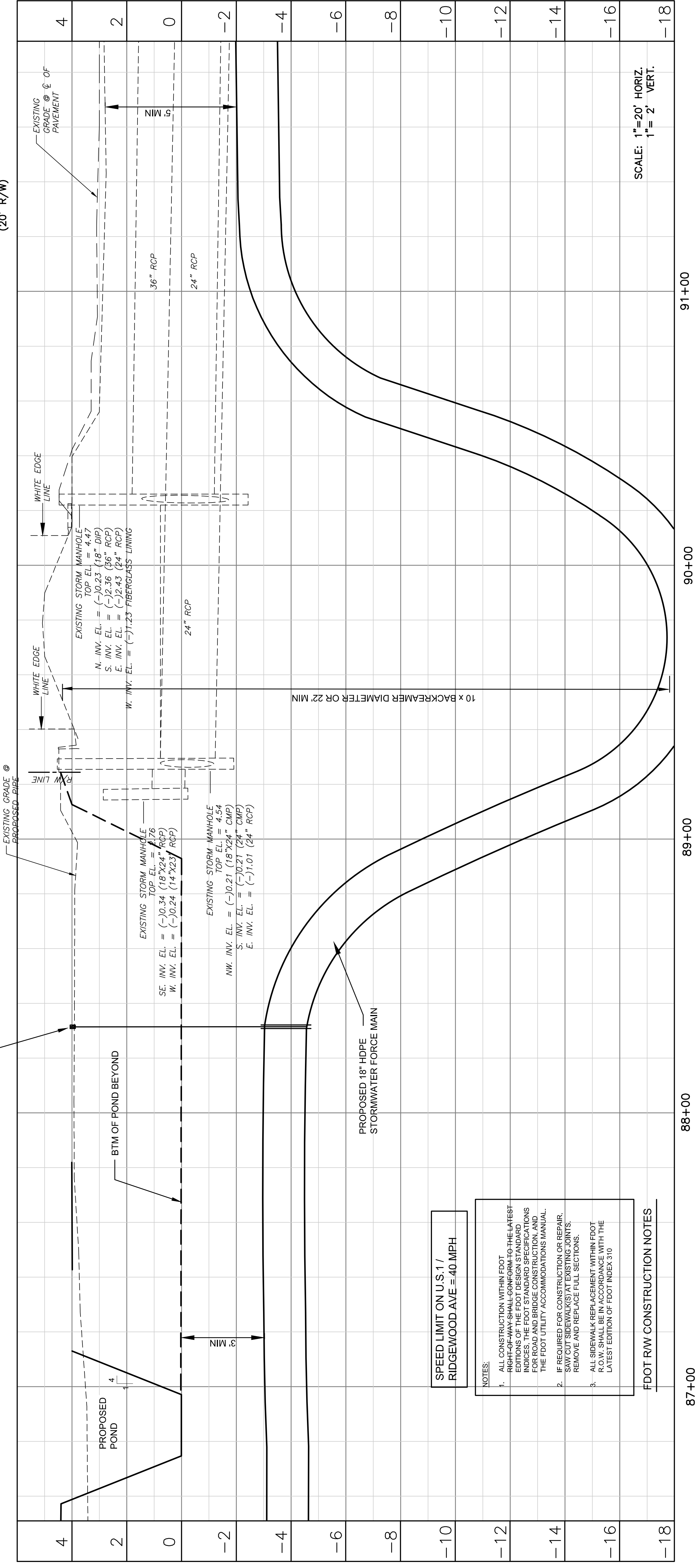
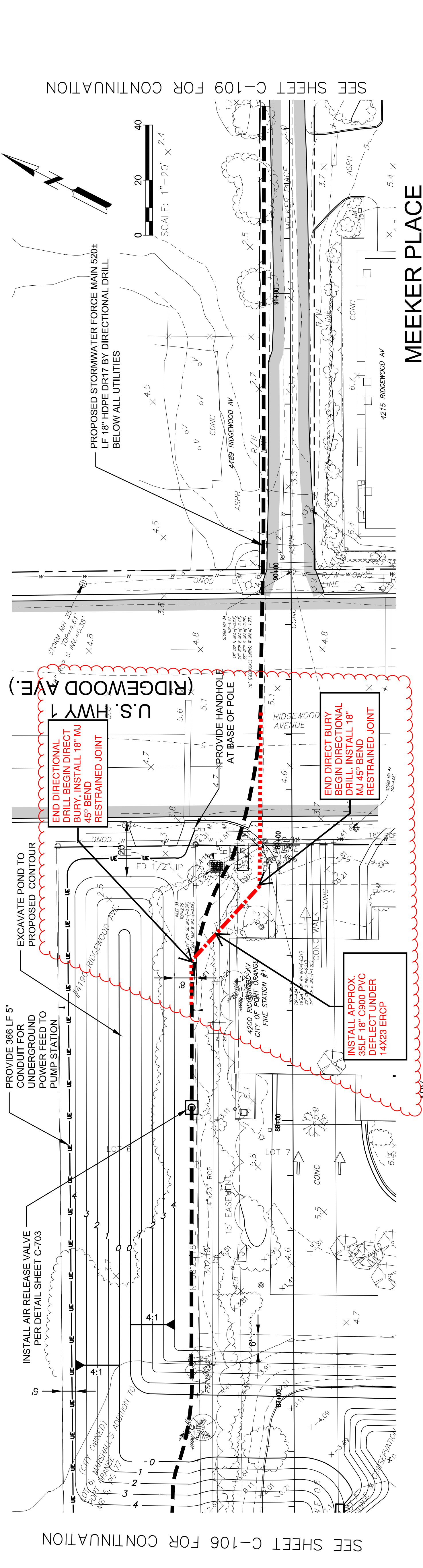
ISSUED 02/07/19 90% PLANS  
 04/23/19 95% PLANS  
 07/15/19 BID SET

**NOT FOR CONSTRUCTION**

PROJECT NO.: 1000715-180738-01  
 DATE: JULY 15, 2019  
 DESIGNED BY: AMG  
 DRAWN BY: SEM  
 CHECKED BY: AMG  
 DO NOT SCALE DRAWINGS

**PROPOSED PLAN AND PROFILE**  
**MEEKER PLACE**

SHEET NO. **C-108**



- NOTES:**
- ALL CONSTRUCTION WITHIN FOOT RIGHT-OF-WAY SHALL CONFORM TO THE LATEST EDITIONS OF THE FDOT DESIGN STANDARD SPECIFICATIONS. THE FDOT STANDARD SPECIFICATIONS SHALL BE USED UNLESS OTHERWISE NOTED IN THE FDOT UTILITY ACCOMMODATIONS MANUAL.
  - IF REQUIRED FOR CONSTRUCTION OR REPAIR, SAW CUT SIDEWALKS AT EXISTING JOINTS. REMOVE AND REPLACE FULL SECTIONS.
  - ALL SIDEWALK REPLACEMENT WITHIN FOOT R.O.W. SHALL BE IN ACCORDANCE WITH THE LATEST EDITION OF FDOT INDEX 310

**FDOT RW CONSTRUCTION NOTES**

**SPEED LIMIT ON U.S. 1 / RIDGEWOOD AVE = 40 MPH**

SCALE: 1"=20' HORIZ.  
 1"=2' VERT.

SEE SHEET C-109 FOR CONTINUATION

SEE SHEET C-106 FOR CONTINUATION