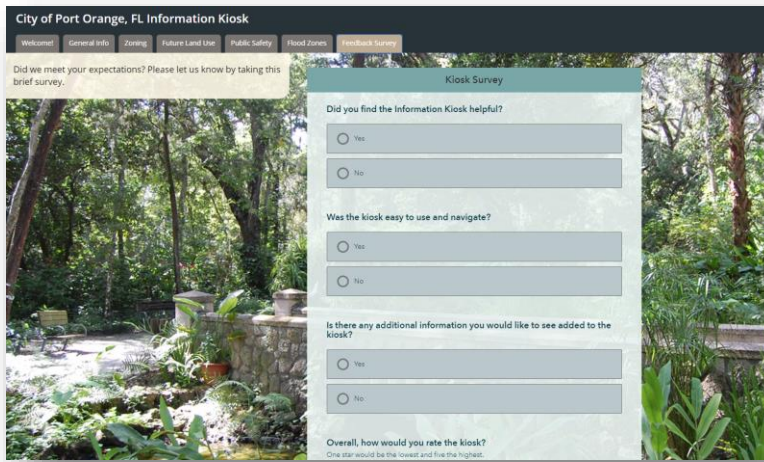
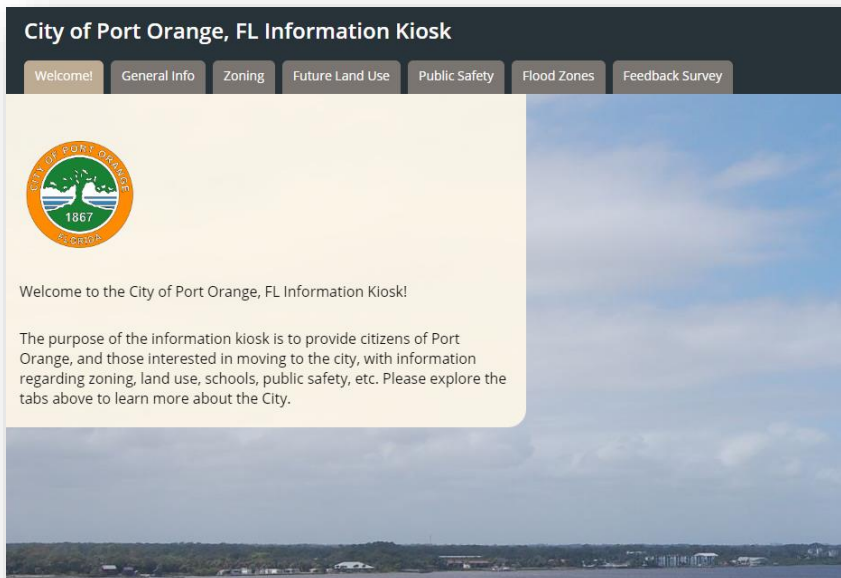


Information Kiosk Help

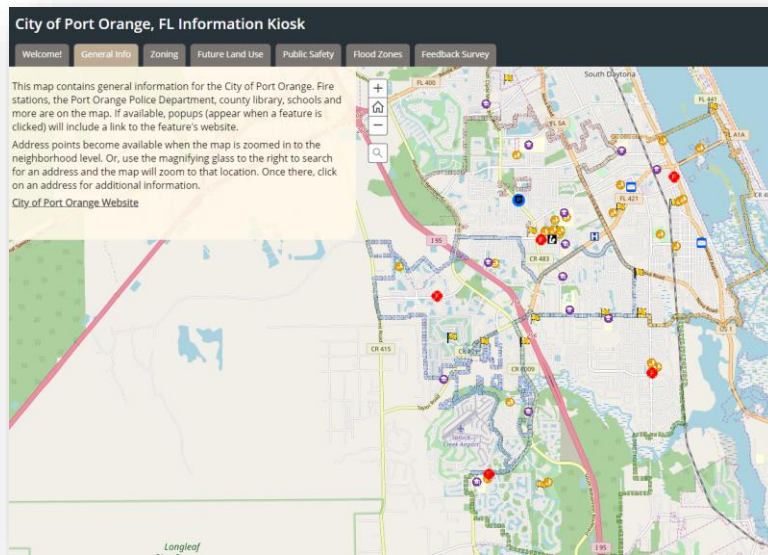
- The purpose of this document is to assist users with navigating around the kiosk.
- If this document does not answer all your questions or you have suggestions, please take the survey on the kiosk (last tab) and let us know how we can improve.



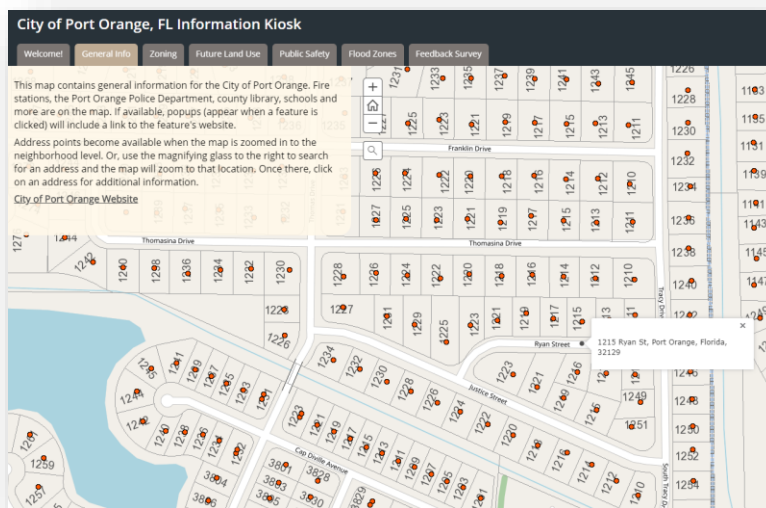
- By default, the kiosk opens to the Welcome tab. You can then jump to any tab listed across the top of the kiosk header.
- The General Info, Zoning, Future Land Use, Public Safety, and Flood Zones tabs all contain maps.



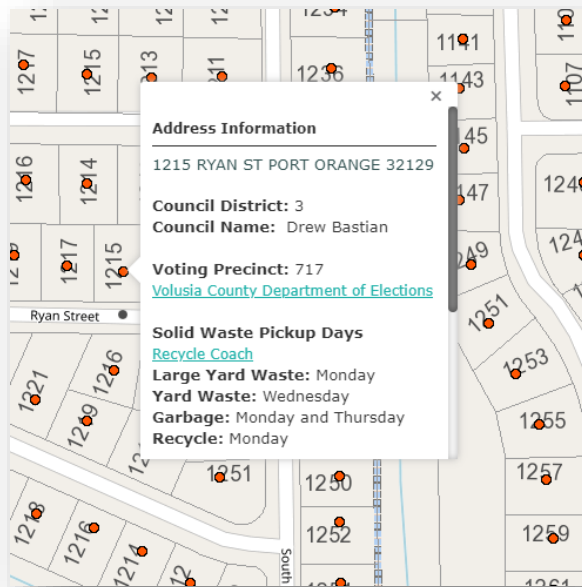
- Once a tab containing a map has been opened, it is possible to zoom in and out, drag the map around to different locations and search for a specific address.
- To search for an address, click on the magnifying glass located next to the text box on the map, type in the address and hit enter.



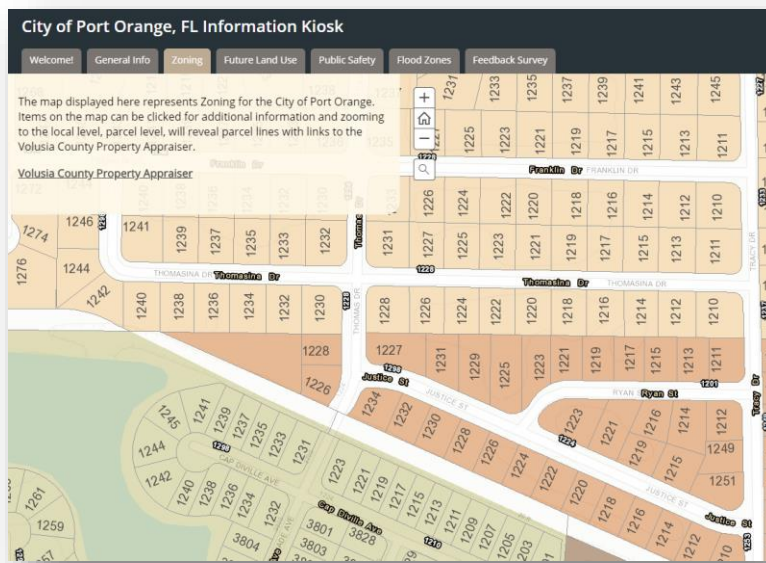
- When you hit enter, the map will zoom in to that location automatically. In this example, we searched for 1215 Ryan St, Port Orange, Florida, 32129



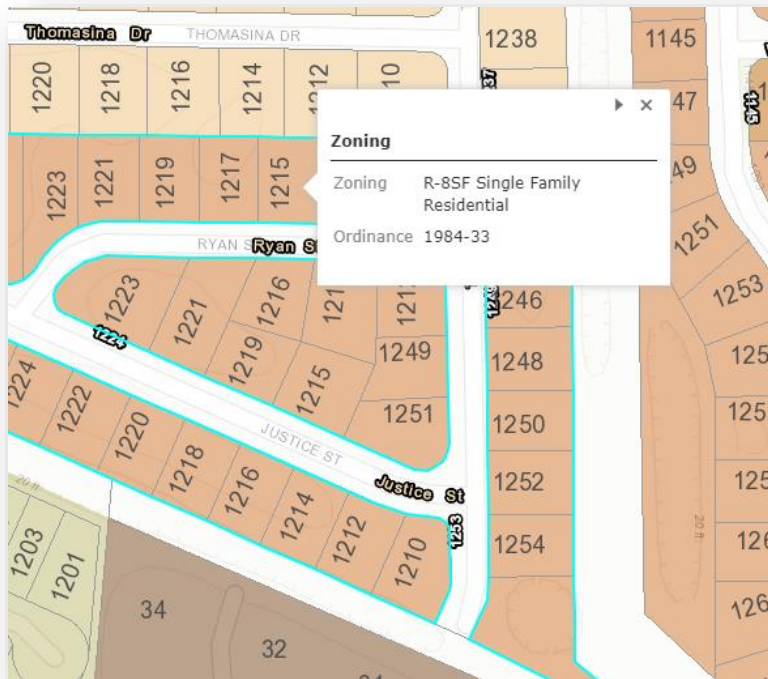
- Once zoomed in, additional features appear on the map. Clicking on an address point will open a pop-up with additional information.



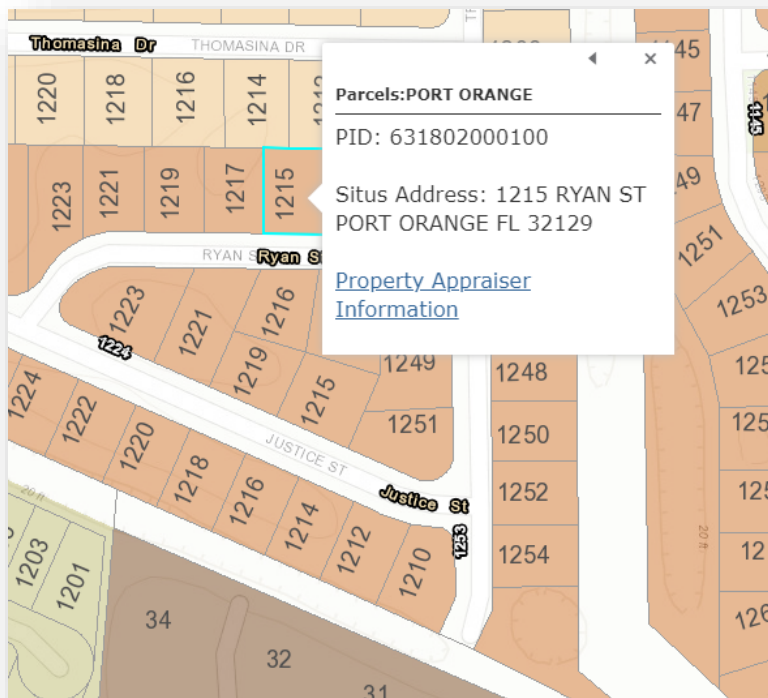
- While still zoomed in, switching to a different tab will show information for the same location. The screen shot below is the result of switching to the Zoning tab while still zoomed to 1215 Ryan St.



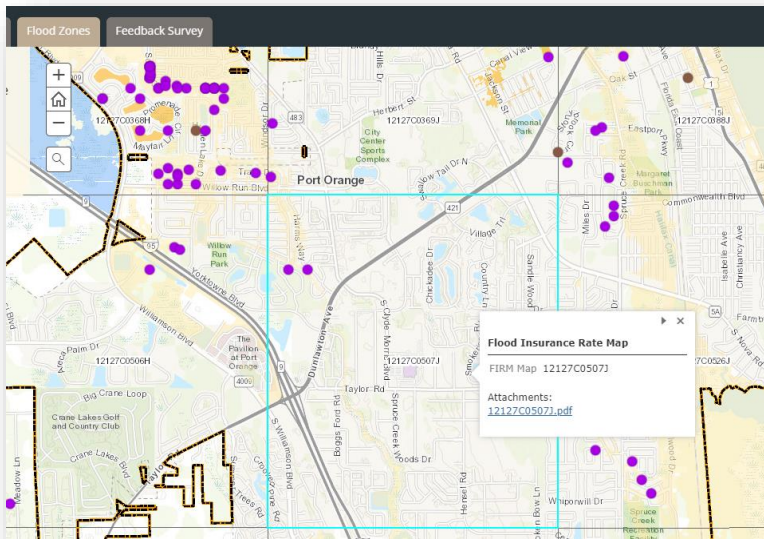
- Clicking on 1215 Ryan St. in the zoning map (tab shown above) will result in a pop-up with zoning and parcel information.



- The first pop-up shows the zoning for 1215 Ryan St. Clicking on the arrow at the top right of the pop-up will scroll through additional pop-ups.



- Tabs in the kiosk that contain maps will behave similarly to the example shown above. Zooming in reveals additional features and some features will have pop-up information that requires scrolling to see all available information.



- Additionally, each map will contain a legend on the right side of the map.

