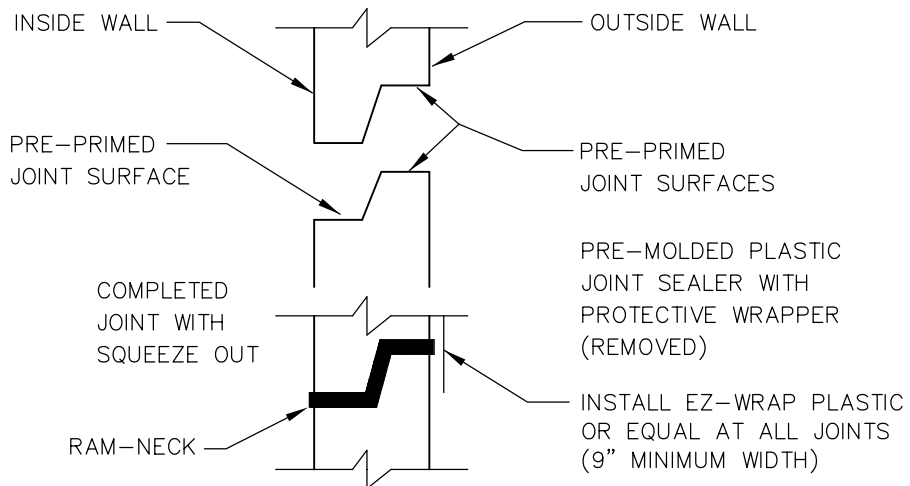


MANHOLE PIPE CONNECTION DETAIL
FOR NEW CONNECTIONS IN EXISTING MANHOLES



PRECAST JOINT
CONNECTION

NOTES:

1. ALL NEW CONNECTIONS TO EXISTING SANITARY SEWER MANHOLES SHALL UTILIZE A CORING METHOD AND THE IN-FIELD INSTALLATION OF A RUBBER BOOT INTO THE MANHOLE.



STANDARD CONSTRUCTION DETAIL
RUBBER BOOT AND PRECAST JOINT
CONNECTION.

REV. 12/08

FILE NAME:

S13.DWG

DETAIL REF:

S-13